

CORPORATE PRESENTATION



# Saturn Power



Prepared by the  
Corporate Services Team



## Presenters



**Eileen Turano**  
Project Developer  
Highfield Project Developer



**Kyle Edginton**  
Sr. Manager, Engineering  
Highfield Project Manager

# About Us

Who We Are

What We Do

Our Philosophy



# Our Founders



Doug is an entrepreneur and business leader with a proven 45 years of business experience. He has built several successful businesses including: Alpine Plant Foods, a bi-national fertilizer company that produced in excess of \$20 million in annual sales, and a wealth management business that managed a book of over 100 million in assets.

**Doug Wagner**  
Founder, President



Ray Roth is an established business leader and has founded several successful businesses. He began his entrepreneurial career by building Roth Drainage Ltd., the largest drainage-contracting firm in North America. Following the sale of Roth Drainage, he established a successful directional drilling company, in addition to several ventures in real estate.

**Ray Roth**  
Founder, COO



# Our Projects



## David Brown Solar Project

Rating: 10MW AC  
Technology: Fixed Tilt PV  
Commercial Operation: Q1 2015  
Owner: Saturn Power

Being awarded a PPA from the Ontario Power Authority (OPA), David Brown Solar Farm is a Saturn Power owned and operated facility rated at 10MW AC.

This project is currently operating and producing above initial projections. Saturn Power was responsible for full funding of the project and managed all stages of development, construction and operation.



## Blind River Fixed 100 Solar Project

Rating: 500 kW AC  
Technology: Fixed Tilt PV  
Commercial Operation: Q3 2018  
Owner: Saturn Power & North Shore Power Group

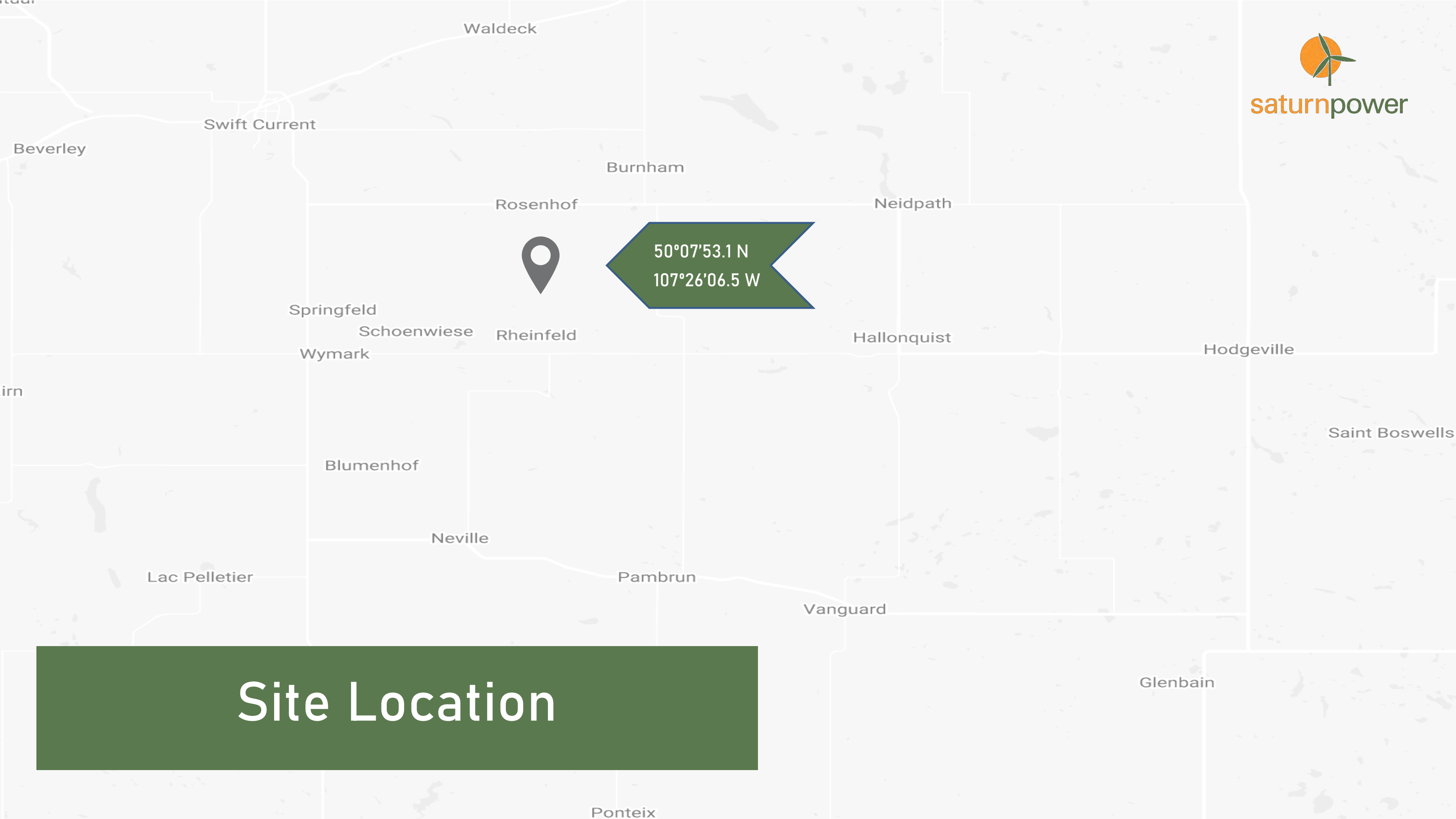
As the developer, Saturn Power was responsible for land agreements, permits, engineering and construction of this fixed panel facility. Saturn Power owns the Fixed 300 Solar Farm in partnership with North Shore Power Group



## Sprucedale Fit 4 Solar Project

Rating: 250 kW AC  
Technology: Single Axis Tracker  
Commercial Operation: Q1 2019  
Owner: Saturn Power

Sprucedale Solar is a Saturn Power owned and operated facility. As the developer, our company was responsible for the permitting, procurement, engineering and construction of this facility. Saturn Power has developed this project as a part of Ontario's FIT 4 program.



Site Location



# Highfield Solar Project Footprint

- The project will be located at the SouthEast corner of Township Rd 140 and Provincial Road No 628 (Range Road 3113).
- The Project Footprint will be approximately 70 Acres within the northwest side of the quarter section (NW-34-13-11-W3M).



# Project Details

- The project was selected by SaskPower as the first approved 10 MW commercial solar energy facility in the Province.
- The project will provide energy to SaskPower under a twenty-year power purchase agreement.
- The project will provide clean power to between 10,000 and 12,000 homes.

<b>Location</b>	RM of Coulee, Southeast of Swift Current, SK
<b>Land Location</b>	NW 1/4 34-13-11
<b>Capacity</b>	10 MW AC 13 MW DC
<b>Project Area</b>	Approximately 70 acres
<b>Technology</b>	Fixed Tilt PV
<b>Number of Solar Panels</b>	Approximately 30,000
<b>Commercial Operation</b>	Expected September 2021
<b>Construction</b>	Estimated 14 months
<b>Expected Annual Output</b>	Up to 21,000 MWh per year
<b>Site Characteristics</b>	Farmland with minimal slope, ~5km from substation



# Highfield Solar Project Environmental Studies

## Plants

During land cover validation, it was determined that rare plant surveys were not required. All land cover inside or within 300 m of the Project Area is cultivated and does not contain suitable habitat for rare plants.

## Soils

Soils in the Project Area were assessed during geotechnical surveys in the summer of 2019.

Use of cover and vegetation to prevent any soil loss.

## Wildlife

Typical breeding bird community of agricultural landscapes.  
No sensitive wildlife species detected in the Project Area.  
No anticipated impacts to wildlife from the Project.

## Land Cover

Project area consists of cropland.  
No wetlands within the Project Area.  
Nearest native grassland is ~300m away.  
Land will be returned to previous use post-decommissioning.

We studied the plants and wildlife to determine potential impacts. The site was found to have negligible impacts and was therefore deemed not a development by the Saskatchewan Ministry of Environment.

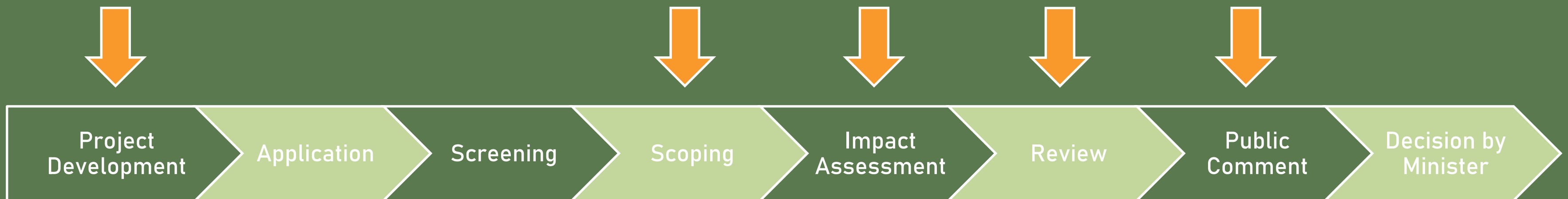


# Highfield Solar Project Environmental Approval

## Project Development

- Description of the project
- Summary of environmental studies and results
- Evaluation of Project effects on the environment
- Identification of migration measures

The Highfield Solar Project was Deemed to NOT be a Development, therefore these Steps are Not Required



## Application & Screening

- Technical proposal submitted to MOE's Environmental Assessment Branch (EAB)
- Evaluated to determine if the Project requires a full Environmental Assessment

## If Deemed Not a "Development"

- Project was deemed not to be a "development" because the environmental effects are negligible
- EAB issues a determination letter, which is posted publicly
- The Project may proceed with other permitting and construction



# Engineering the Highfield Solar Project





POINT OF  
INTERCONNECTION  
SEE DRAWING E804

CONTROL HOUSE,  
GROUNDING  
TRANSFORMER,  
AND METERING

MEDIUM VOLTAGE  
SKID #3

MEDIUM VOLTAGE  
SKID #1

STAGING AREA

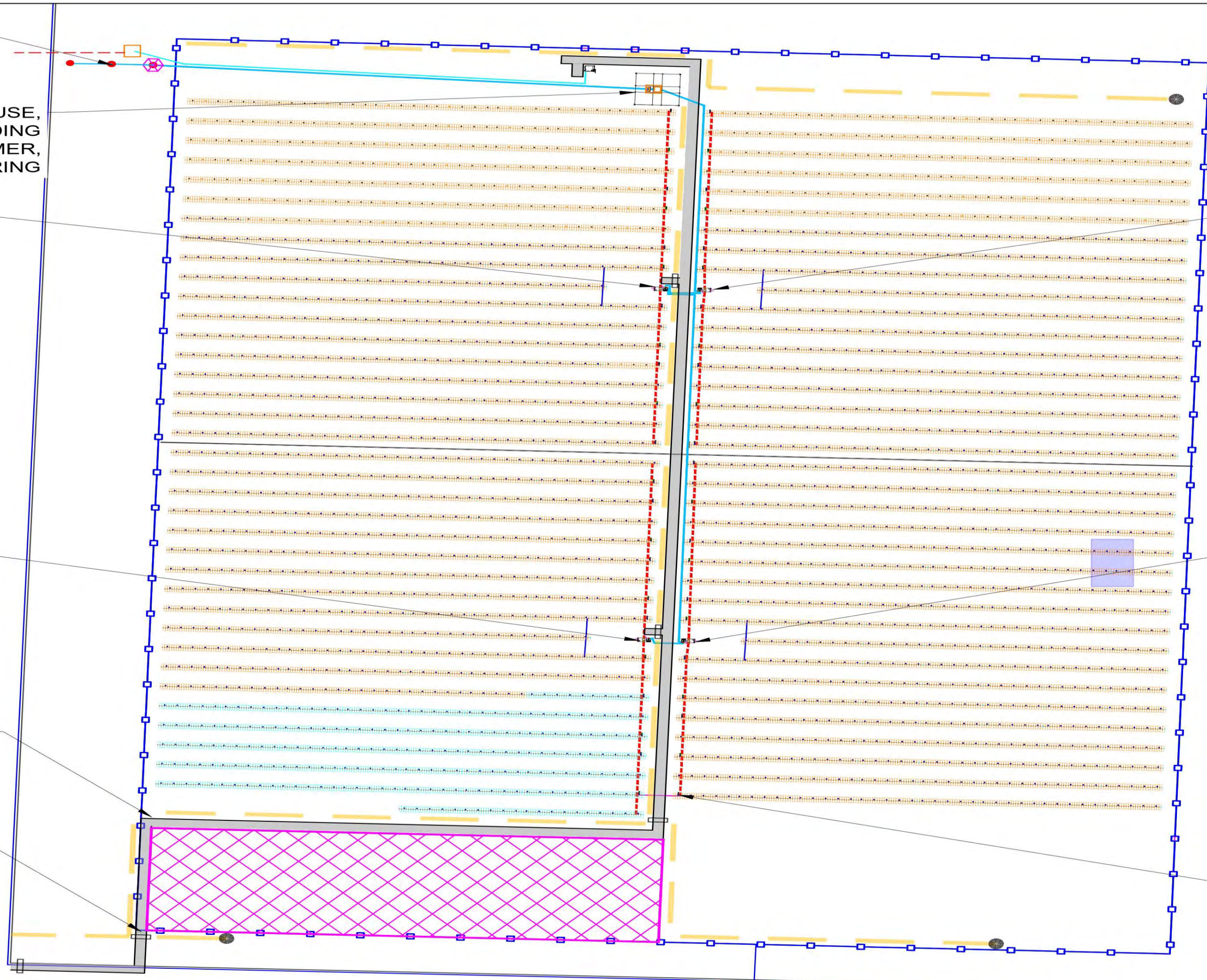
SITE ENTRANCE



MEDIUM VOLTAGE  
SKID #4

MEDIUM VOLTAGE  
SKID #2

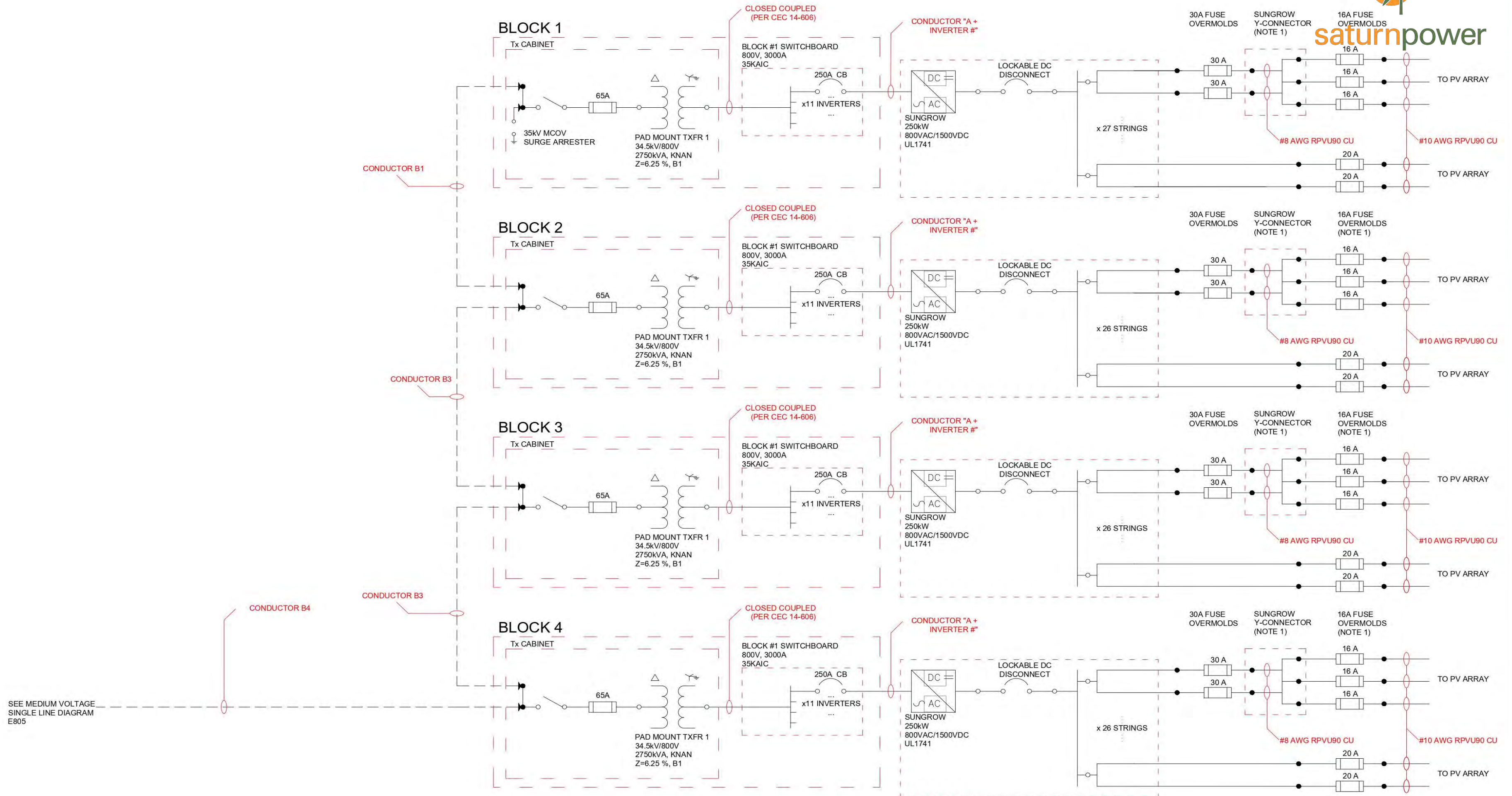
INVERTER LOCATION







saturnpower







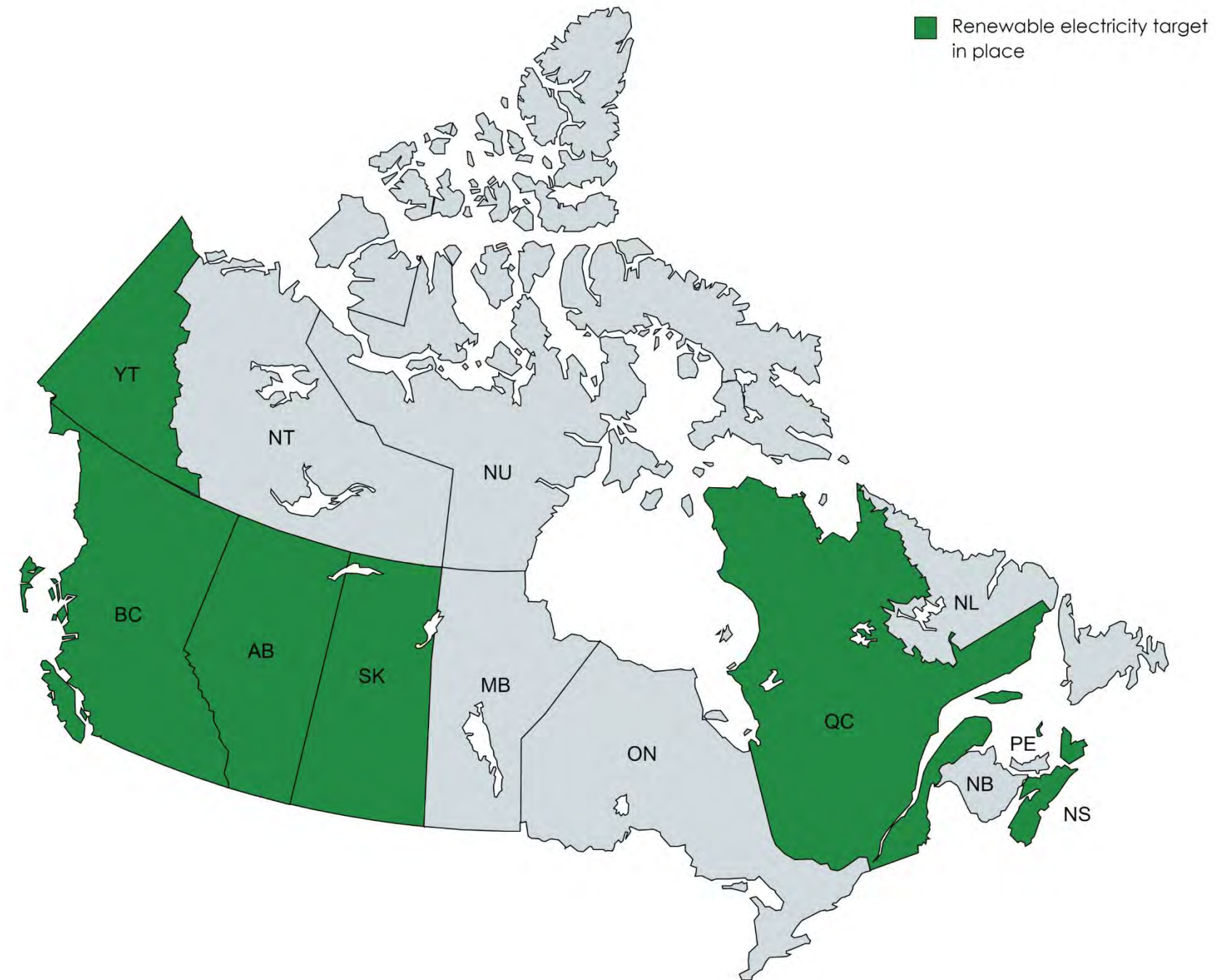




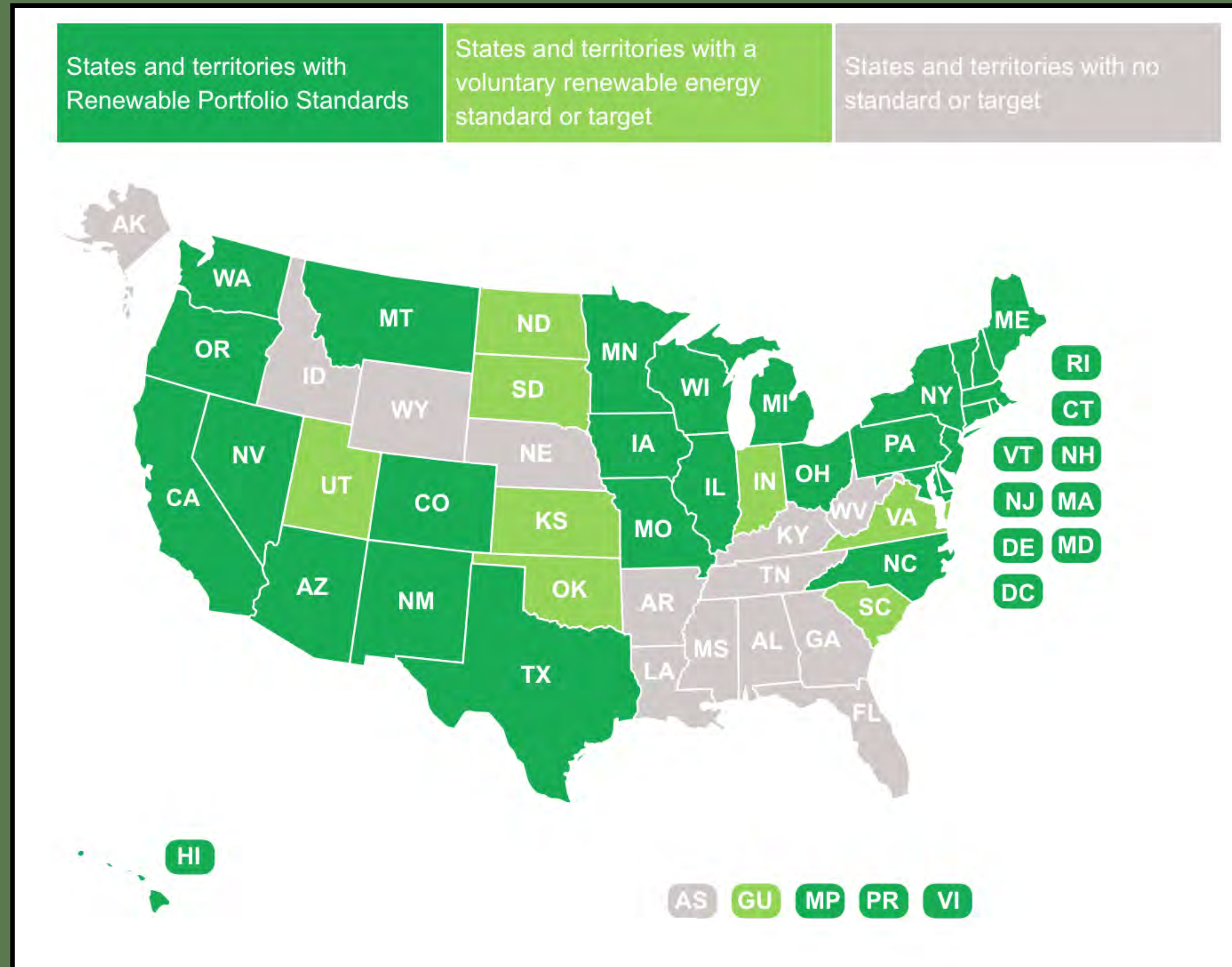


# The Future of Renewable Energy





Alberta	30% by 2030
BC	93% - No date specified
Manitoba	N/A
New Brunswick	N/A
Newfoundland	N/A
Northwest Territories	N/A
Nova Scotia	40% by 2022
Ontario	N/A
PEI	N/A
Quebec	Increase renewable energy output by 25% vs. 2013 levels by 2030
Saskatchewan	50% by 2030
Yukon	97% renewable grid by 2030; 70% renewable off-grid electricity by 2030





Questions?